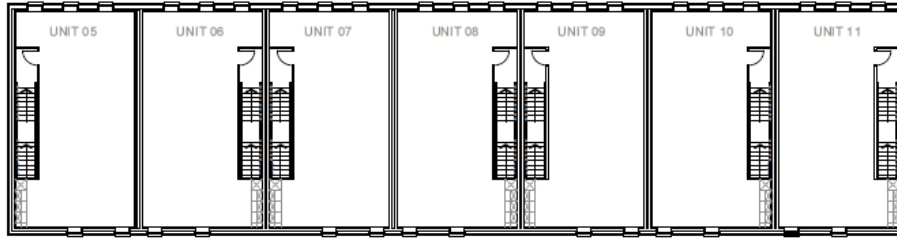
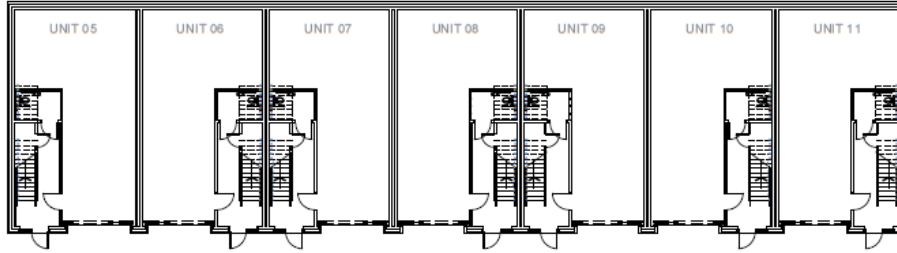


APPLICATION NO : 21/2240/FUL
APPENDIX 7 – BLOCK B FLOOR PLANS AND ELEVATIONS



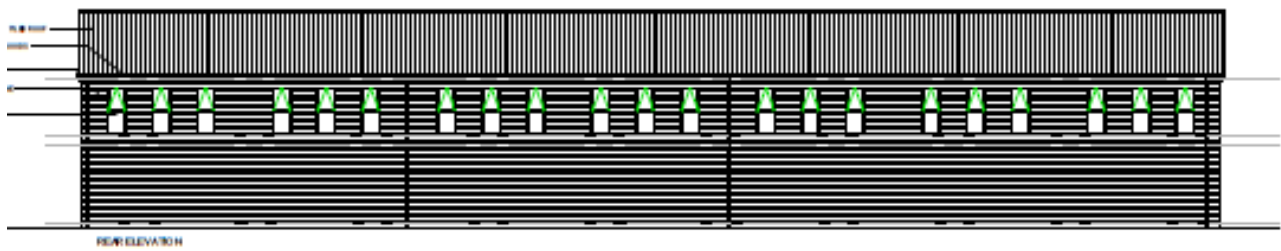
FIRST FLOOR PLAN - 7 UNITS



GROUND FLOOR PLAN - 7 UNITS



SIDE ELEVATION



FRONT ELEVATION

Land At Urray Nook Road , Eaglescliffe , Stockton-On-Tees
Erection of B2/B8 warehouse with ancillary attached office accommodation and 3no. B2/B8 hybrid blocks (comprising 19no. individual units) to include associated access, works, and landscaping.